



Jars 'R' Us

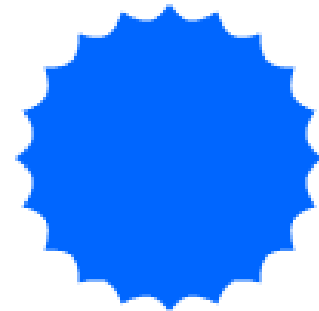
Process For The Future

MISSION STATEMENT

Jars 'R' Us is committed to producing the best jars in our industry, providing our customers with extreme service, profitable pricing and fast, secure shipping to their location. We are family friendly, Eco Friendly and strive to be the supplier and employer of choice.



Jars 'R' Us
Our Jars Seal the Deal



General Timeline - Jars 'R' Us

*** Timeline varies depending on scope and development



Needs Analysis

Determine scope of business plan, equipment, Web site and training

Database Design

Link all departments within Jars 'R' Us to include customers, AR, AP, accurate inventories and real time order processing

Web Site

Design comprehensive Web to include Jars 'R' Us information, online-ordering, online inventory and real time transaction

Business System Design

Development of a streamlined and working business plan that brings modern processing and systems to insure success and profitability

Computer Equipment

Modern computers, file and database server, network storage, facility network and security practices

Training & Staffing

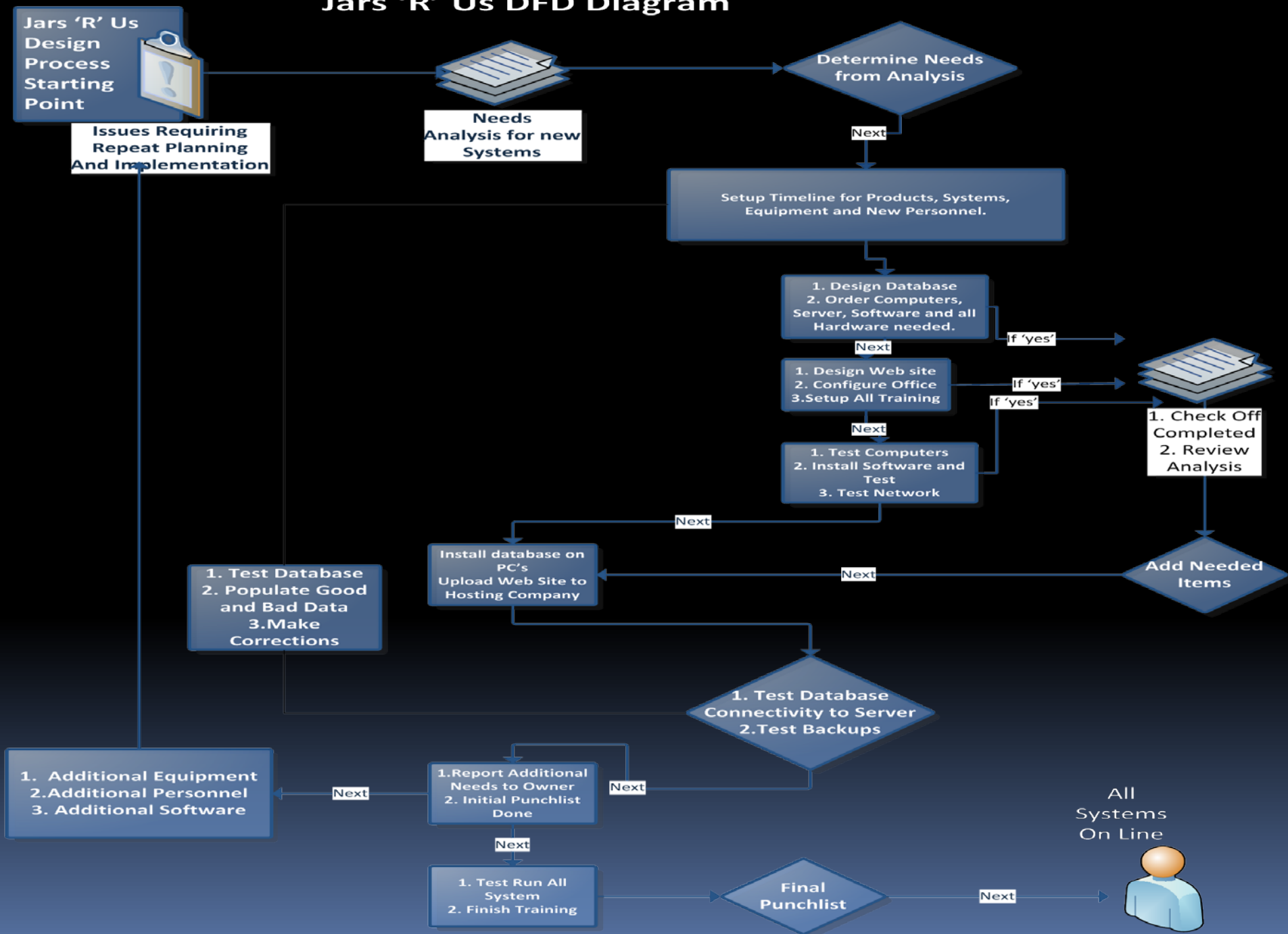
Recruit needed positions and train all personnel in new systems

Web Site Requirements

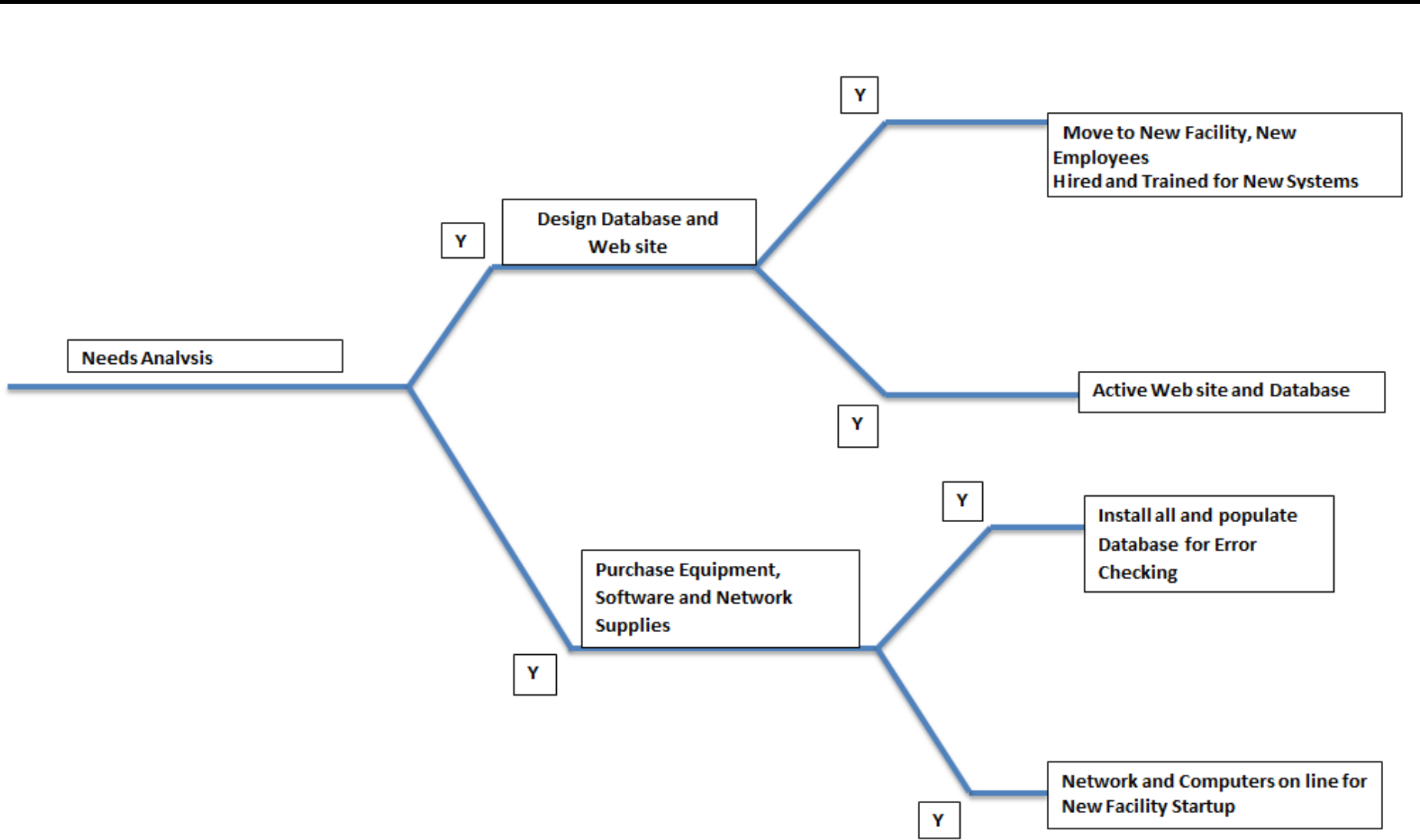
- Company Information – History, Mission Statement, Products and Services Offered
- Interactivity with Customers and Potential Customers
- Availability for Customers to contact Jars 'R' Us
- Request for Information from Potential Customers
- Company Directory with E-mail Capability for Customers
- Secure login for Customers
- On-line Ordering for Customers
- Real-time Inventory lookup for Customers



Jars 'R' Us DFD Diagram

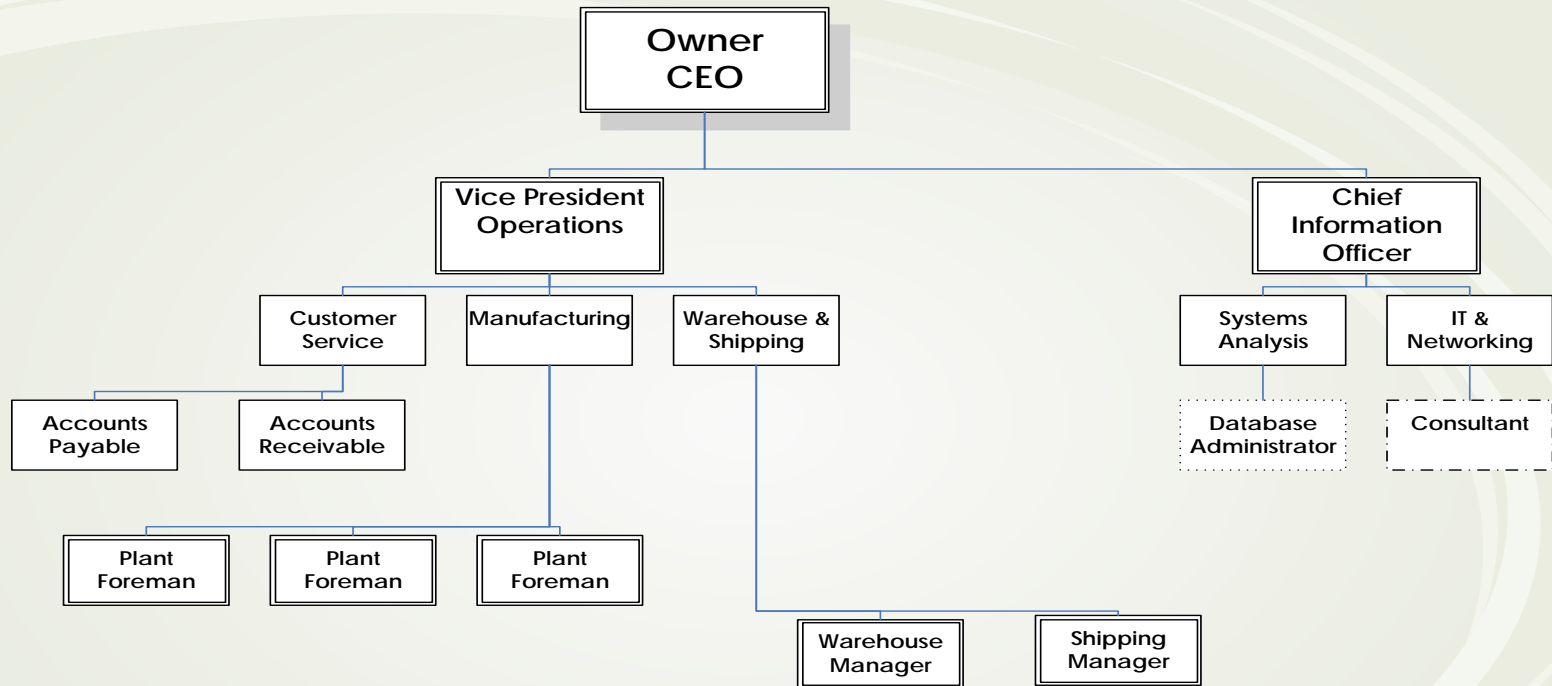


Procedure Tree



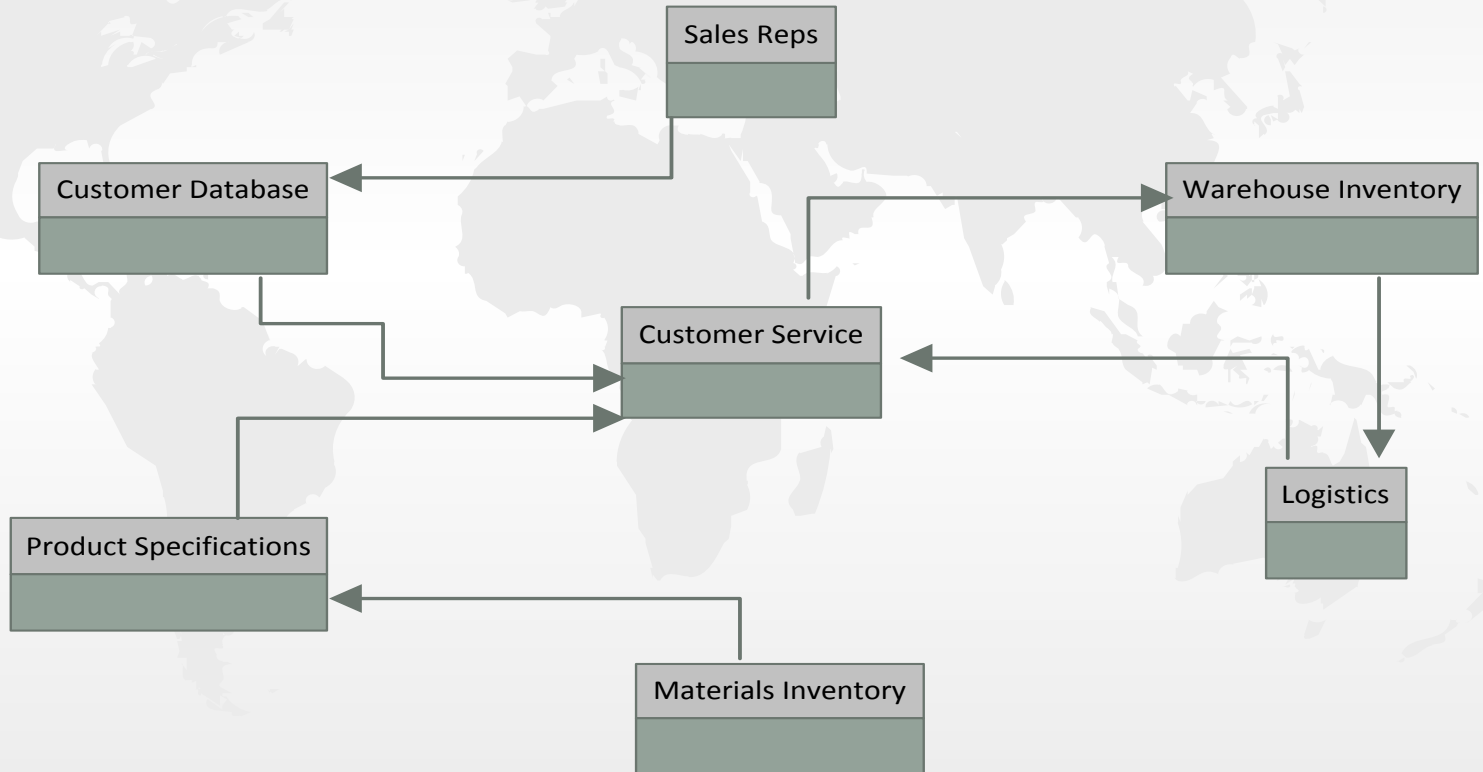
Department Chart

Jars 'R' Us Department Level



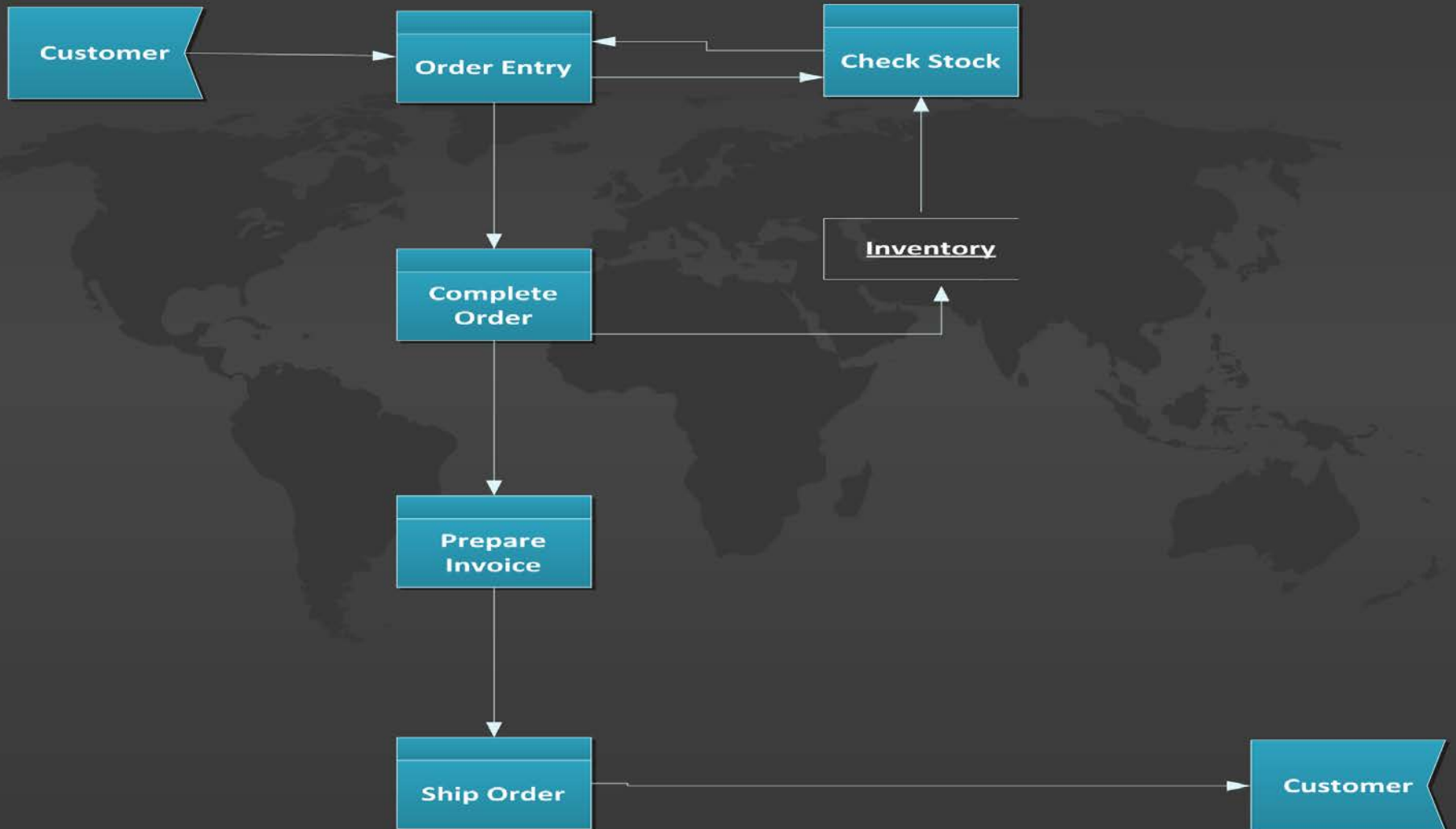
Proposed Database

Jars 'R' Us Database

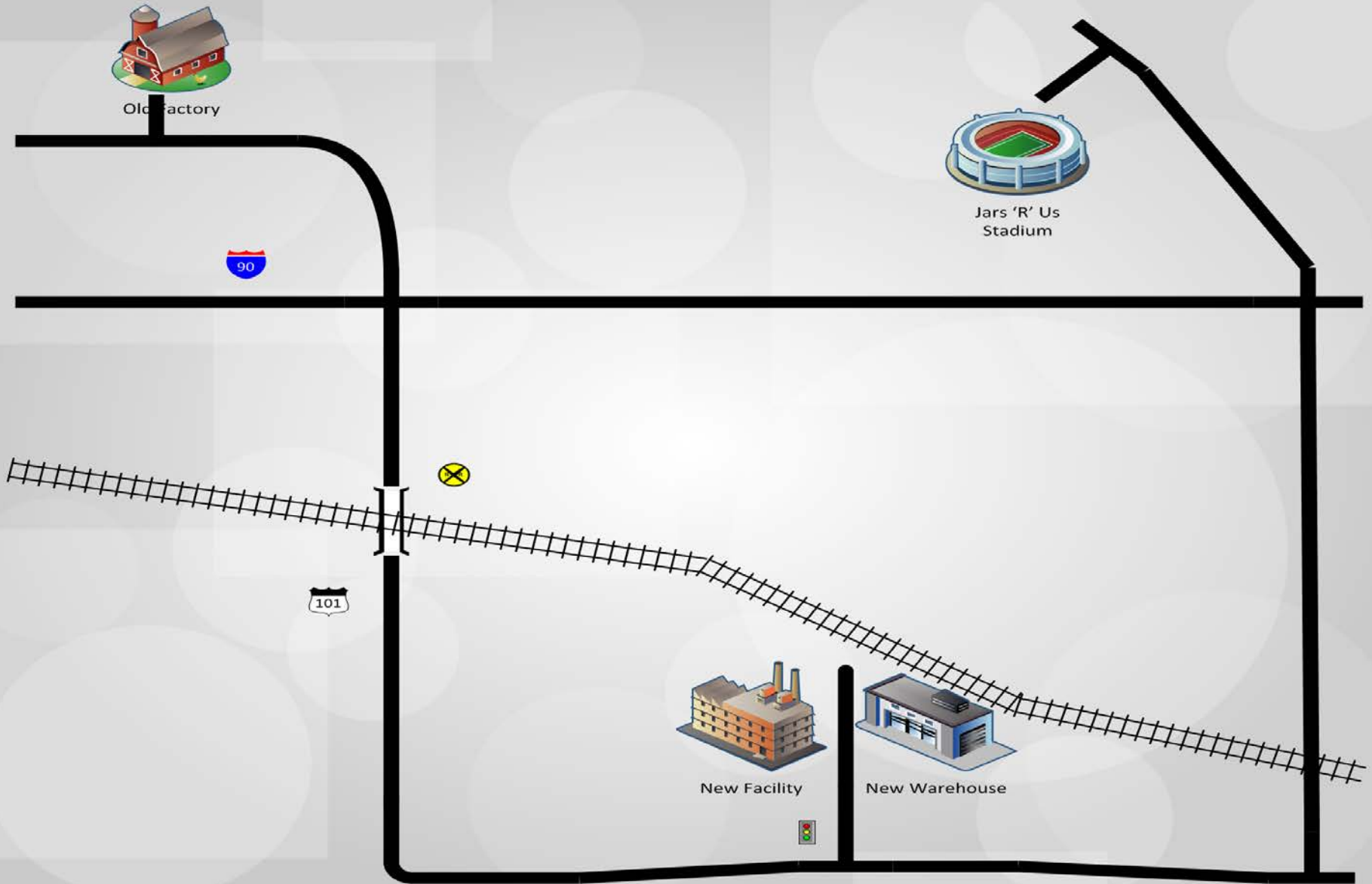


Customer Chart

Customer Order Flow



Moving Diagram



Computers

**HP Compaq 6200 Pro (LA062UT#ABA) Desktop PC Intel Core i5
2400(3.10GHz) 4GB DDR3 500GB HDD Capacity Intel HD Graphics 2000**

Windows 7 Professional 64-bit

Business Desktops & Workstations

Intel Core i5-2400 3.10GHz

64 bit Quad-Core Processor

6MB L3 Cache

4GB 1333MHz DDR3 SDRAM

500GB 7200rpm SATA 3.0 Gb/s

DVD Super Multi Drive with Light Scribe

Integrated Intel HD Graphics 2000

Sound card – Integrated

Gigabit Ethernet

Windows 7 Professional 64-bit

Microsoft Office 2010 Professional

Warranty – 2 Years Parts & Labor

Hanns-G HZ201DPB

Screen Size 20"

Glare Screen Anti-Glare Hard coating

Widescreen – Yes

Recommended Resolution 1600 x 900

Display Colors 16.7 Million

Contrast Ratio X-Contrast 15,000:1 (1,000:1)

Manufacturer Warranty

Parts - 3 years limited

Labor - 3 years limited



Server

HP ProLiant ML330 G6 Tower Server System Intel Xeon E5620 2.40GHz 6GB 600911-001

The HP ProLiant ML330 G6 is a new dual processor tower platform built on the latest Intel Xeon processors with QPI technology to create a unique system architecture. This unique architecture enables you to scale your business as needed and allows you to improve the efficiency of how you spend your IT dollars. This ML330 G6 not only delivers excellent performance with the latest technology but it also incorporates the industry's most powerful embedded management technology with the HP ProLiant Onboard Administrator (powered by iLO 2 controller), allowing you to manage servers anytime and anywhere.

ProLiant ML330 G6

5U/Tower

Intel Xeon E5620 2.40GHz

12MB L3 Cache

Quad-core

80W

MAX Processors - 2

8GB PC3-10600R (DDR3-1333) Registered DIMMs

HP Smart Array B110i SATA RAID Controller Hot plug advanced key

HP Half-Height SATA DVD-ROM Optical Drive

ATI RN50 - 128 MB

Embedded NC326i PCI Express Dual Port Gigabit Server Adapter

3 (1 dedicated for HP Integrated Lights-Out 2 (ILO 2))

Manufacturer Warranty

Parts - 3 years limited

Labor - 1 year limited



Server Operating System

Microsoft Windows Server 2008 Enterprise Edition 30 CLIENT

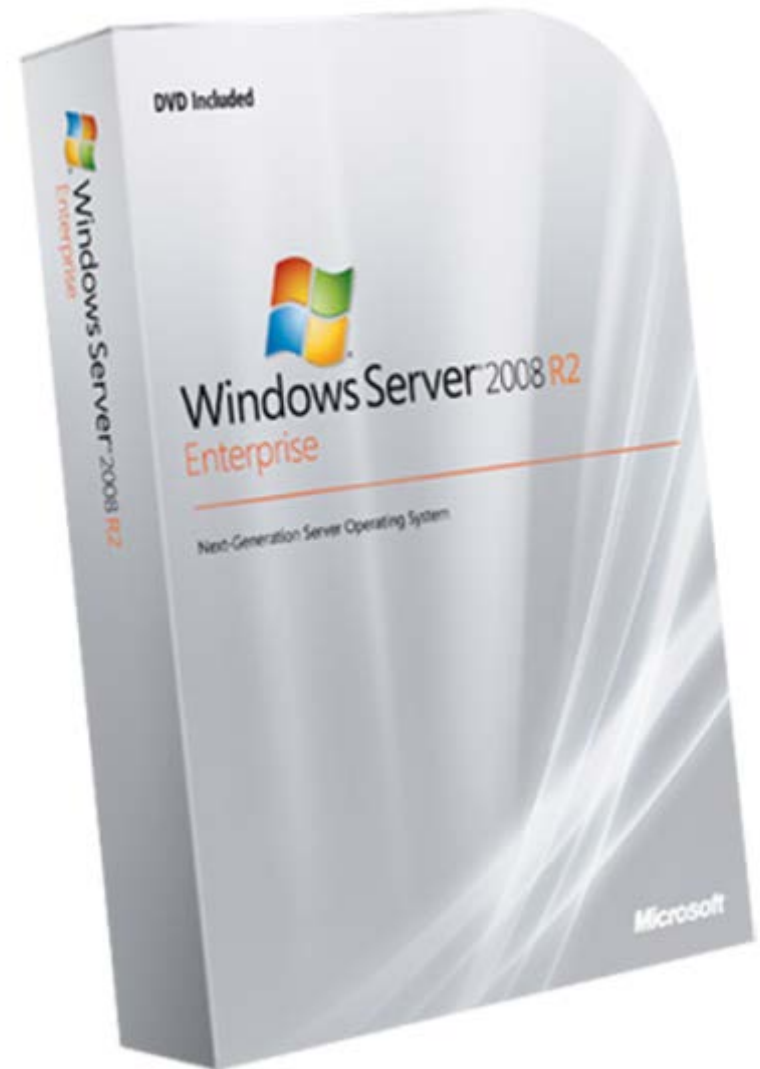
Windows Server 2008 Enterprise delivers an enterprise-class platform for deploying business-critical applications. Help improve availability with clustering and hot-add processor capabilities. Help improve security with consolidated identity management features. Reduce infrastructure costs by consolidating applications with virtualization licensing rights. Windows Server 2008 Enterprise provides the foundation for a highly dynamic, scalable IT infrastructure.

Windows Server 2008 Enterprise delivers an enterprise-class platform for deploying business-critical applications.

Help improve availability with clustering and hot-add processor capabilities.
Help improve security with consolidated identity management features.

Reduce infrastructure costs by consolidating applications with virtualization licensing rights.

Windows Server 2008 Enterprise provides the foundation for a highly dynamic, scalable IT infrastructure.



Network Switch

Cisco Small Business ESW500 ESW-520-48-K9 Switch 10/100Mbps + 1000Mbps 48 x 10/100 ports 2 x 10/100/1000BASE-T 2 x SFP ports

CISCO ESW 500 SERIES SWITCHES OFFER A RANGE OF FEATURES:

- Easy integration with Cisco Smart Business Communication System to provide complete data, voice, video, and wireless networking solutions
- Choice of configuration and management tools with simple graphical user interfaces for easier configuration, management, and troubleshooting
- Choice of Fast Ethernet and Gigabit Ethernet connectivity
- Power over Ethernet (PoE) available on up to 48 ports of Fast Ethernet and 24 ports of Gigabit Ethernet
- Quality of service to prioritize network traffic to keep critical network applications running at top performance
- Advanced security services, including IEEE 802.1X port security and access control lists, to keep unauthorized users off the network
- VLAN support for assigning users to different networks, improving their performance and network security
- Flexible network design with Small Form-Factor Pluggable (SFP) expansion slots
- Enhanced 5-year hardware warranty

CISCO ESW 500 SERIES SWITCHES SUPPORT:

- **Expandability:** Integrate easily with the Cisco Smart Business Communications System to provide a complete data, voice, video, and wireless networking solution.
- **Performance:** Up to Gigabit Ethernet speeds to deliver optimal network performance.
- **Flexibility:** Security, quality, and power features support new applications and technologies as business needs change.
- **Simple Management:** Choice of easy-to-use embedded device management software or Cisco Configuration Assistant to manage the entire network.
- **Reliability:** Rigorously tested to provide reliable connectivity and performance.
- **Affordable:** Designed specifically for small businesses – without sacrificing features or security.



General Timeline

Six Months Prior To Rollout

*** Timeline varies depending on scope and development



INNOVATION
SUCCESS
EVALUATION
DEVELOPMENT
GROWTH
SOLUTION
PROGRESS
MARKETING

Test All Computer Equipment

Ensure all computers and Operating Systems are working properly including network connectivity, connectivity with server and network backup working

Database Connectivity

Ensure database connectivity with all computers, web site and data storage on server

Database Testing

Populate database with correct and incorrect data to ensure proper operation and error checking is active and finds bad data

Web Site

Upload Web Site for testing and develop punch list for all errors found

Training

Ensure all new and existing personnel have completed training including follow-up training if needed

Staff Meetings

Set up monthly staff meetings to address any problems or issues found and answer any concerns from Jars 'R' Us staff

Feedback & Follow up

Review feedback weekly and complete all follow up issues to include Equipment, Web Site, Database, Training and all Errors reported

Questions and Answers

Thank you for choosing J & M Computing Solutions

“We Value Your Confidence And Trust”

